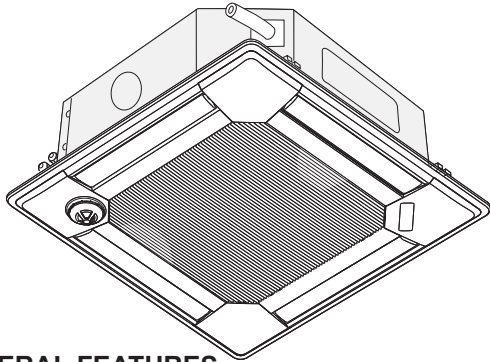


Job Name: \_\_\_\_\_

Drawing Reference: \_\_\_\_\_

Schedule No. \_\_\_\_\_



**GENERAL FEATURES**

- R410A or R22 refrigerant-compatible
- Lightweight, low-profile compact design
- Customizable wide airflow pattern enables better air distribution—direction of each vane can be adjusted to fit room layout through Deluxe MA or ME controllers
- Auto wave airflow in heating mode—unit independently cycles through horizontal and vertical positions for more even heat distribution
- Four-speed fan settings and auto fan speed adjustment mode
- Corner-pocket design for simplified installation
- Built-in condensate lift mechanism; lifts to 33-1/2 in.
- Outside air capability
- Multiple sizes up to 36,000 Btu/h
- i-see sensor option uses infrared rays to search for hot and cold spots

**SPECIFICATIONS**

**Capacity\***

Cooling.....12,000 Btu/h  
 Heating.....13,500 Btu/h

**Power**

Power Source.....208 / 230V, 1-phase, 60Hz

**Power Consumption**

Cooling.....0.03 kW  
 Heating.....0.02 kW

**Current**

Cooling.....0.22 A  
 Heating.....0.14 A

Minimum Circuit Ampacity (MCA).....0.28 A

Maximum Overcurrent Protection (MOCP) Fuse.....15 A

**External Finish**...Grille (White; Munsell No. 6.4Y 8.9 / 0.4)

**External Dimensions**

Inches.....10-3/16 h x 33-1/8 w x 33-1/8 d  
 mm.....258 h x 840 w x 840 d

**Grille (PLP-40BAU):**

Inches.....1-3/8 h x 37-7/16 w x 37-7/16 d  
 mm.....35 h x 950 w x 950 d

**Net Weight**

Unit.....49 lbs. / 22 kg  
 Grille.....13 lbs. / 6 kg

**Coil Type**.....Cross Fin  
 (Aluminum Plate Fin and Copper Tube)

**Fan**

Type x Quantity.....Turbo Fan x 1  
 Airflow Rate  
 (Low - Mid 1 - Mid 2 - High).....388 - 424 - 459 - 494 cfm  
 Motor  
 Type.....DC Motor  
 Output.....0.050 kW

**Standard Air Filter**.....Polypropylene Honeycomb

**Refrigerant Piping Dimensions**

**R410A or R22**

Liquid (High Pressure).....1/4" / 6.35 mm Flare  
 Gas (Low Pressure).....1/2" / 12.7 mm Flare

**Drainpipe Dimension**.....O.D. 1-1/4" / 32 mm

**Sound Level**

(Low - Mid 1 - Mid 2 - High).....27 - 28 - 29 - 31 dB(A)

**Options**

- Air Outlet Shutter Plate (2 pieces).....PAC-SH51SP-E
- High-Efficiency Filter (MERV 10).....PAC-SH59KF-E
- Multi-function Casement.....PAC-SH53TM-E
- i-see Sensor Corner Panel.....PAC-SA1ME-E
- Wireless Signal Receiver.....PAR-SA9FA-E
- Space Panel.....PAC-SH48AS-E
- Flange for Ventilation Air Intake.....PAC-SH65OF-E

\* Cooling / Heating capacity indicated at the maximum value at operation under the following conditions:

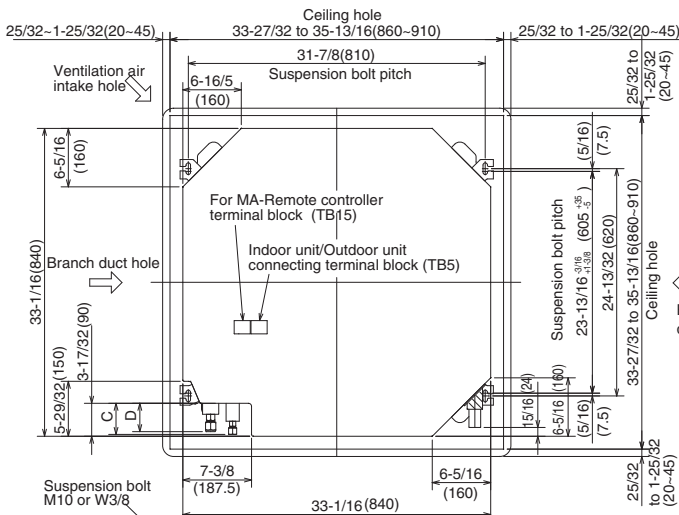
Cooling: Indoor 80°F (27°C) DB / 67°F (19°C) WB, Outdoor 95°F (35°C) DB  
 Heating: Indoor 70°F (21°C) DB, Outdoor 47°F (8°C) DB / 43°F (6°C) WB

**Note:** Ventilation air: Providing sufficient ventilation air is an important part of every building design. ASHRAE Standard 62 provides the minimum ventilation air requirement. Also, check local codes.

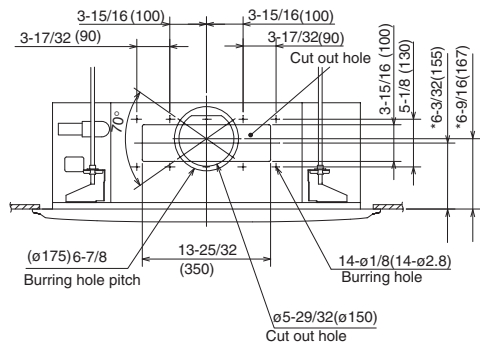
Notes:

# Model: PLFY-P12NBMU-E – DIMENSIONS

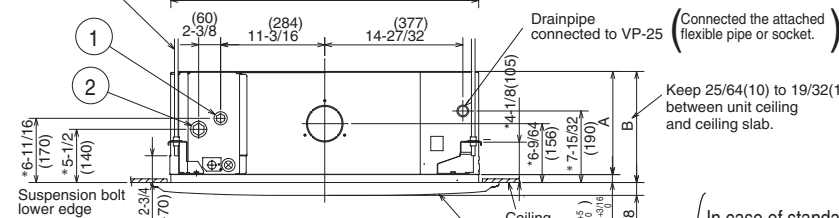
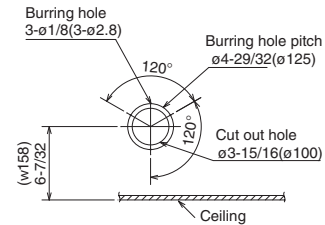
Unit : inch(mm)



## Detail connecting of branch duct



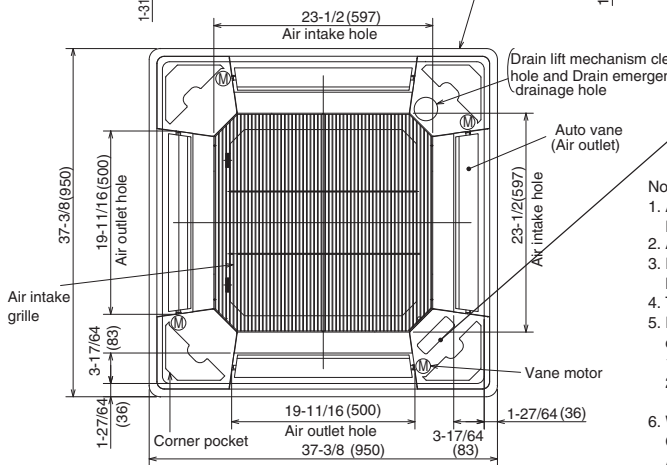
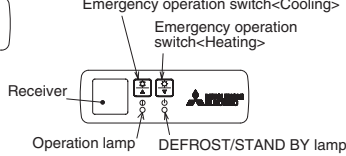
## Detail drawing of ventilation air intake hole



Keep 25/64(10) to 19/32(15) between unit ceiling and ceiling slab.

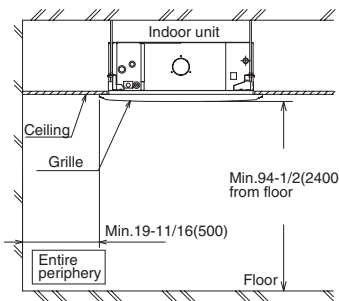
In case of standard grille

In case of wireless signal receiver



### Note:

- As for drainpipe, please use O.D. 1-1/4(32) PVC TUBE. Drain lift mechanism is included.
- As for suspension bolt, please use M10 or 3/8. (Procured at local site)
- Electrical box may be removed for the service purpose. Make sure to slack the electrical wire little bit for control/power wires connection.
- The height of the indoor unit is able to be adjusted with the grille attached.
- For the installation of the optional high efficiency filter or optional multi-functional casement.
  - Add 5-5/16"(135mm) to the dimensions marked with an \* on the figures.
  - The optional high efficiency filter becomes optional multi-functional casement and concomitant use.
- When installing the branch ducts, be sure to insulate adequately. Otherwise condensation and dripping may occur. As for necessary installation / service space, please refer to the bottom, left figure.



Models	1	2	A	B	C	D
PLFY-P12NBMU-E PLFY-P15NBMU-E	Refrigerant pipe ...ø6.35 Flared connection ...1/4"	Refrigerant pipe ...ø12.7 Flared connection ...1/2"				
PLFY-P18NBMU-E	Refrigerant pipe ø6.35 / ø9.52 Flared connection 1/4" / 3/8" (compatible)	Refrigerant pipe ø12.7 / ø15.88 Flared connection 1/2" / 5/8" (compatible)	9-1/2 (241)	10-3/16 (258)	3-5/32 (80)	2-29/32 (74)
PLFY-P24NBMU-E PLFY-P30NBMU-E	Refrigerant pipe ...ø9.52 Flared connection ...3/8"	Refrigerant pipe ...ø15.88 Flared connection ...5/8"				
PLFY-P36NBMU-E	Refrigerant pipe ...ø9.52 Flared connection ...3/8"	Refrigerant pipe ø15.88 / ø19.05 Flared connection 5/8" / 3/4" (compatible)	11-1/16 (281)	11-3/4 (298)	3-11/32 (85)	3-1/32 (77)

Mitsubishi Electric Air Conditioning & Refrigeration Systems Works acquired ISO 9001 certification under Series 9000 of the International Standard Organization (ISO) based on a review of quality warranties for the production of refrigeration and air conditioning equipment.

ISO Authorization System  
The ISO 9000 series is a plant authorization system relating to quality warranties as stipulated by the ISO. ISO 9001 certifies quality warranties based on the "design, development, production, installation and auxiliary services" for products built at an authorized plant.

Mitsubishi Electric Air Conditioning & Refrigeration Systems Works acquired environmental management system standard ISO 14001 certification.

The ISO 14000 series is a set of standards applying to environmental protection set by the International Standard Organization (ISO).



Certificate Number EC97J1227

C SD - PLFY-P12NBMU-E - 1 - 200709 © MITSUBISHI ELECTRIC / HVAC 2007



HVAC Advanced Products Division

Mitsubishi Electric & Electronics USA, Inc.

3400 Lawrenceville Suwanee Rd.

Suwanee, GA 30024

Tele: 678-376-2900 • Fax: 800-889-9904

Toll Free: 800-433-4822 (#4)

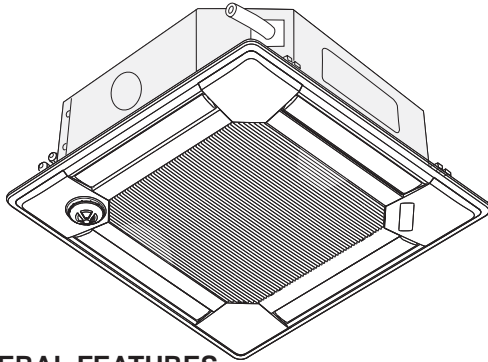
www.mehvac.com

Specifications are subject to change without notice.

Job Name: \_\_\_\_\_

Drawing Reference: \_\_\_\_\_

Schedule No. \_\_\_\_\_



**GENERAL FEATURES**

- R410A or R22 refrigerant-compatible
- Lightweight, low-profile compact design
- Customizable wide airflow pattern enables better air distribution—direction of each vane can be adjusted to fit room layout through Deluxe MA or ME controllers
- Auto wave airflow in heating mode—unit independently cycles through horizontal and vertical positions for more even heat distribution
- Four-speed fan settings and auto fan speed adjustment mode
- Corner-pocket design for simplified installation
- Built-in condensate lift mechanism; lifts to 33-1/2 in.
- Outside air capability
- Multiple sizes up to 36,000 Btu/h
- i-see sensor option uses infrared rays to search for hot and cold spots

**SPECIFICATIONS**

**Capacity\***

Cooling.....15,000 Btu/h  
 Heating.....17,000 Btu/h

**Power**

Power Source.....208 / 230V, 1-phase, 60Hz

**Power Consumption**

Cooling.....0.04 kW  
 Heating.....0.03 kW

**Current**

Cooling.....0.29 A  
 Heating.....0.22 A

Minimum Circuit Ampacity (MCA).....0.36 A

Maximum Overcurrent Protection (MOCP) Fuse.....15 A

**External Finish**...Grille (White; Munsell No. 6.4Y 8.9 / 0.4)

**External Dimensions**

Inches.....10-3/16 h x 33-1/8 w x 33-1/8 d  
 mm.....258 h x 840 w x 840 d

**Grille (PLP-40BAU):**

Inches.....1-3/8 h x 37-7/16 w x 37-7/16 d  
 mm.....35 h x 950 w x 950 d

**Net Weight**

Unit.....49 lbs. / 22 kg  
 Grille.....13 lbs. / 6 kg

**Coil Type**.....Cross Fin  
 (Aluminum Plate Fin and Copper Tube)

**Fan**

Type x Quantity.....Turbo Fan x 1  
 Airflow Rate  
 (Low - Mid 1 - Mid 2 - High).....424 - 459 - 494 - 565 cfm  
 Motor  
 Type.....DC Motor  
 Output.....0.050 kW

**Standard Air Filter**.....Polypropylene Honeycomb

**Refrigerant Piping Dimensions**

R410A or R22  
 Liquid (High Pressure).....1/4" / 6.35 mm Flare  
 Gas (Low Pressure).....1/2" / 12.7 mm Flare

**Drainpipe Dimension**.....O.D. 1-1/4" / 32 mm

**Sound Level**

(Low - Mid 1 - Mid 2 - High).....27 - 28 - 30 - 31 dB(A)

**Options**

- Air Outlet Shutter Plate (2 pieces).....PAC-SH51SP-E
- High-Efficiency Filter (MERV 10).....PAC-SH59KF-E
- Multi-function Casement.....PAC-SH53TM-E
- i-see Sensor Corner Panel.....PAC-SA1ME-E
- Wireless Signal Receiver.....PAR-SA9FA-E
- Space Panel.....PAC-SH48AS-E
- Flange for Ventilation Air Intake.....PAC-SH65OF-E

\* Cooling / Heating capacity indicated at the maximum value at operation under the following conditions:

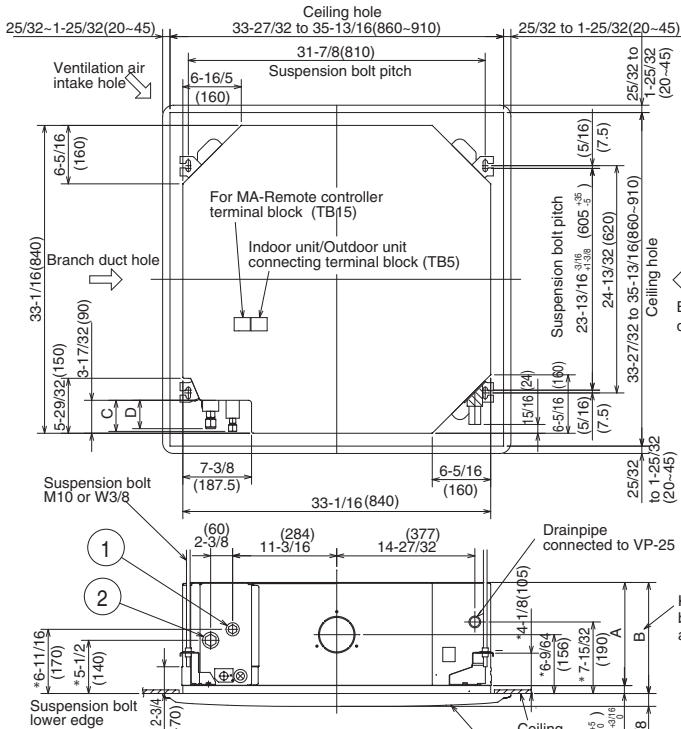
Cooling: Indoor 80°F (27°C) DB / 67°F (19°C) WB, Outdoor 95°F (35°C) DB  
 Heating: Indoor 70°F (21°C) DB, Outdoor 47°F (8°C) DB / 43°F (6°C) WB

**Note:** Ventilation air: Providing sufficient ventilation air is an important part of every building design. ASHRAE Standard 62 provides the minimum ventilation air requirement. Also, check local codes.

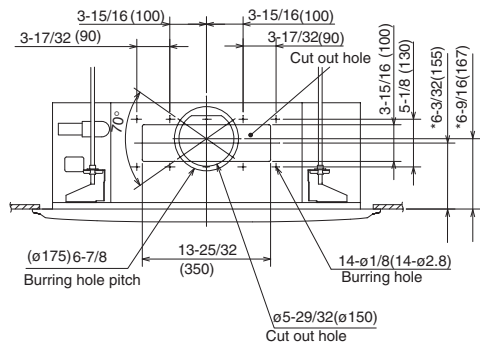
Notes:

# Model: PLFY-P15NBMU-E – DIMENSIONS

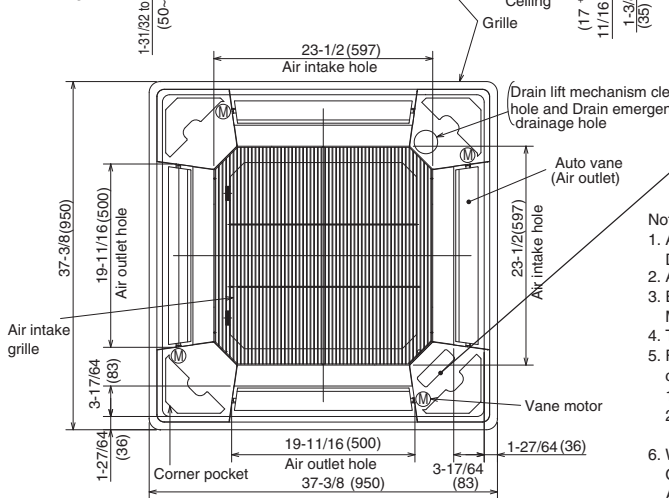
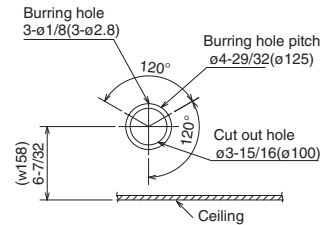
Unit : inch(mm)



## Detail connecting of branch duct

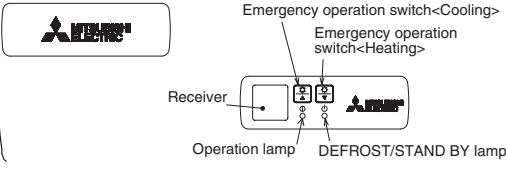


## Detail drawing of ventilation air intake hole

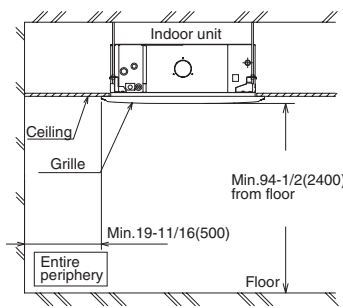


In case of standard grille

In case of wireless signal receiver



- Note:
- As for drainpipe, please use O.D. 1-1/4(32) PVC TUBE. Drain lift mechanism is included.
  - As for suspension bolt, please use M10 or 3/8. (Procured at local site)
  - Electrical box may be removed for the service purpose. Make sure to slack the electrical wire little bit for control/power wires connection.
  - The height of the indoor unit is able to be adjusted with the grille attached.
  - For the installation of the optional high efficiency filter or optional multi-functional casement.
    - Add 5-5/16"(135mm) to the dimensions marked with an \* on the figures.
    - The optional high efficiency filter becomes optional multi-functional casement and concomitant use.
  - When installing the branch ducts, be sure to insulate adequately. Otherwise condensation and dripping may occur. As for necessary installation / service space, please refer to the bottom, left figure.



Models	1	2	A	B	C	D
PLFY-P12NBMU-E PLFY-P15NBMU-E	Refrigerant pipe --ø6.35 Flared connection ...1/4"	Refrigerant pipe --ø12.7 Flared connection ...1/2"				
PLFY-P18NBMU-E	Refrigerant pipe ø6.35 / ø9.52 Flared connection 1/4" / 3/8" (compatible)	Refrigerant pipe ø12.7 / ø15.88 Flared connection 1/2" / 5/8" (compatible)	9-1/2 (241)	10-3/16 (258)	3-5/32 (80)	2-29/32 (74)
PLFY-P24NBMU-E PLFY-P30NBMU-E	Refrigerant pipe --ø9.52 Flared connection ...3/8"	Refrigerant pipe --ø15.88 Flared connection ...5/8"				
PLFY-P36NBMU-E	Refrigerant pipe ...ø15.88 / ø19.05 Flared connection 5/8" / 3/4"	Refrigerant pipe ø15.88 / ø19.05 Flared connection 5/8" / 3/4"	11-1/16 (281)	11-3/4 (298)	3-11/32 (85)	3-1/32 (77)



Mitsubishi Electric Air Conditioning & Refrigeration Systems Works acquired ISO 9001 certification under Series 9000 of the International Standard Organization (ISO) based on a review of quality warranties for the production of refrigeration and air conditioning equipment.

ISO Authorization System  
The ISO 9000 series is a plant authorization system relating to quality warranties as stipulated by the ISO. ISO 9001 certifies quality warranties based on the "design, development, production, installation and auxiliary services" for products built at an authorized plant.



Mitsubishi Electric Air Conditioning & Refrigeration Systems Works acquired environmental management system standard ISO 14001 certification.

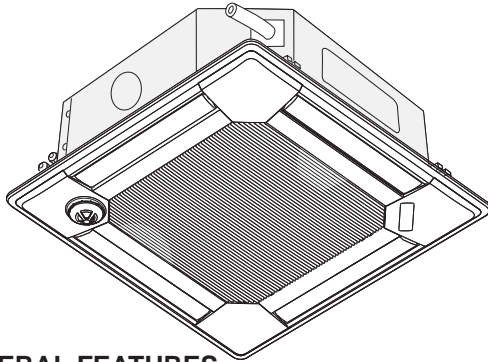
The ISO 14000 series is a set of standards applying to environmental protection set by the International Standard Organization (ISO).

**MITSUBISHI ELECTRIC**  
HVAC Advanced Products Division  
Mitsubishi Electric & Electronics USA, Inc.  
3400 Lawrenceville Suwanee Rd.  
Suwanee, GA 30024  
Tele: 678-376-2900 • Fax: 800-889-9904  
Toll Free: 800-433-4822 (#4)  
www.mehvac.com  
Specifications are subject to change without notice.

Job Name: \_\_\_\_\_

Drawing Reference: \_\_\_\_\_

Schedule No. \_\_\_\_\_



**GENERAL FEATURES**

- R410A or R22 refrigerant-compatible
- Lightweight, low-profile compact design
- Customizable wide airflow pattern enables better air distribution—direction of each vane can be adjusted to fit room layout through Deluxe MA or ME controllers
- Auto wave airflow in heating mode—unit independently cycles through horizontal and vertical positions for more even heat distribution
- Four-speed fan settings and auto fan speed adjustment mode
- Corner-pocket design for simplified installation
- Built-in condensate lift mechanism; lifts to 33-1/2 in.
- Outside air capability
- Multiple sizes up to 36,000 Btu/h
- i-see sensor option uses infrared rays to search for hot and cold spots

**SPECIFICATIONS**

**Capacity\***

Cooling.....18,000 Btu/h  
 Heating.....20,000 Btu/h

**Power**

Power Source.....208 / 230V, 1-phase, 60Hz

**Power Consumption**

Cooling.....0.05 kW  
 Heating.....0.04 kW

**Current**

Cooling.....0.36 A  
 Heating.....0.29 A

Minimum Circuit Ampacity (MCA).....0.45 A

Maximum Overcurrent Protection (MOCP) Fuse.....15 A

**External Finish**...Grille (White; Munsell No. 6.4Y 8.9 / 0.4)

**External Dimensions**

Inches.....10-3/16 h x 33-1/8 w x 33-1/8 d  
 mm.....258 h x 840 w x 840 d

**Grille (PLP-40BAU):**

Inches.....1-3/8 h x 37-7/16 w x 37-7/16 d  
 mm.....35 h x 950 w x 950 d

**Net Weight**

Unit.....51 lbs. / 23 kg  
 Grille.....13 lbs. / 6 kg

**Coil Type**.....Cross Fin  
 (Aluminum Plate Fin and Copper Tube)

**Fan**

Type x Quantity.....Turbo Fan x 1  
 Airflow Rate

(Low - Mid 1 - Mid 2 - High).....494 - 530 - 565 - 636 cfm

**Motor**

Type.....DC Motor  
 Output.....0.050 kW

**Standard Air Filter**.....Polypropylene Honeycomb

**Refrigerant Piping Dimensions**

**R410A**

Liquid (High Pressure).....1/4" / 6.35 mm Flare

Gas (Low Pressure).....1/2" / 12.7 mm Flare

**R22**

Liquid (High Pressure).....3/8" / 9.52 mm Flare

Gas (Low Pressure).....5/8" / 15.88 mm Flare

**Drainpipe Dimension**.....O.D. 1-1/4" / 32 mm

**Sound Level**

(Low - Mid 1 - Mid 2 - High).....28 - 29 - 30 - 32 dB(A)

**Options**

- Air Outlet Shutter Plate (2 pieces).....PAC-SH51SP-E
- High-Efficiency Filter (MERV 10).....AC-SH59KF-E
- Multi-function Casement.....PAC-SH53TM-E
- i-see Sensor Corner Panel.....PAC-SA1ME-E
- Wireless Signal Receiver.....PAR-SA9FA-E
- Space Panel.....PAC-SH48AS-E
- Flange for Ventilation Air Intake.....PAC-SH65OF-E

\* Cooling / Heating capacity indicated at the maximum value at operation under the following conditions:

Cooling: Indoor 80°F (27°C) DB / 67°F (19°C) WB, Outdoor 95°F (35°C) DB

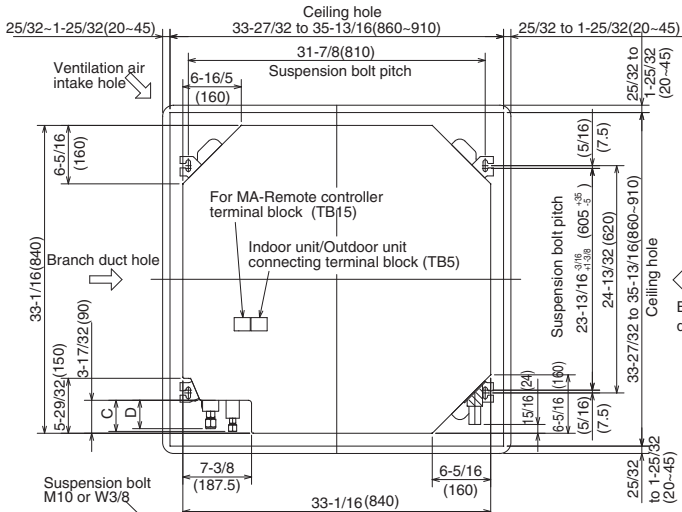
Heating: Indoor 70°F (21°C) DB, Outdoor 47°F (8°C) DB / 43°F (6°C) WB

**Note:** Ventilation air: Providing sufficient ventilation air is an important part of every building design. ASHRAE Standard 62 provides the minimum ventilation air requirement. Also, check local codes.

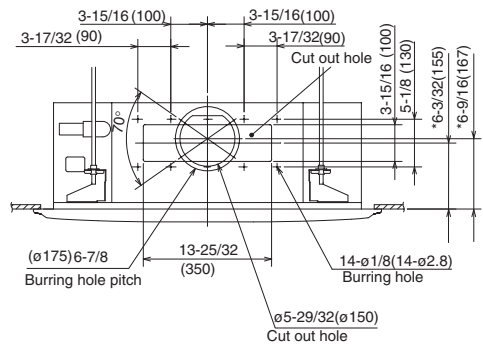
Notes: \_\_\_\_\_

# Model: PLFY-P18NBMU-E – DIMENSIONS

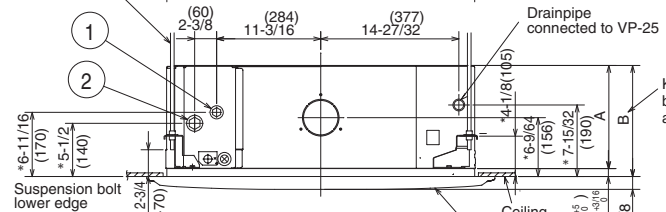
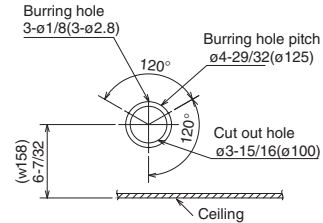
Unit : inch(mm)



## Detail connecting of branch duct

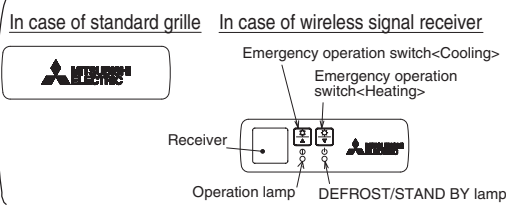
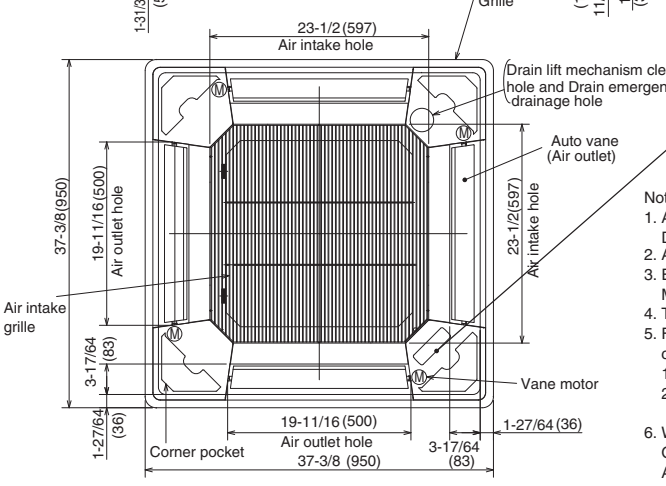


## Detail drawing of ventilation air intake hole



Drainpipe connected to VP-25 (Connected the attached flexible pipe or socket.)

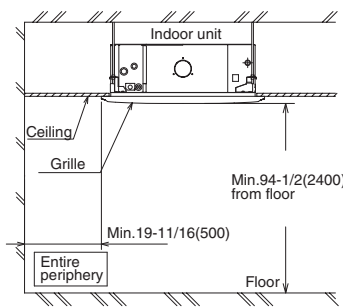
Keep 25/64(10) to 19/32(15) between unit ceiling and ceiling slab.



Note:

- As for drainpipe, please use O.D. 1-1/4(32) PVC TUBE. Drain lift mechanism is included.
- As for suspension bolt, please use M10 or 3/8. (Procured at local site)
- Electrical box may be removed for the service purpose.
- Make sure to slack the electrical wire little bit for control/power wires connection.
- The height of the indoor unit is able to be adjusted with the grille attached.
- For the installation of the optional high efficiency filter or optional multi-functional casement.
  - Add 5-5/16"(135mm) to the dimensions marked with an \* on the figures.
  - The optional high efficiency filter becomes optional multi-functional casement and concomitant use.
- When installing the branch ducts, be sure to insulate adequately. Otherwise condensation and dripping may occur.

As for necessary installation / service space, please refer to the bottom, left figure.



Models	1	2	A	B	C	D
PLFY-P12NBMU-E PLFY-P15NBMU-E	Refrigerant pipe ...ø6.35 Flared connection ...1/4"	Refrigerant pipe ...ø12.7 Flared connection ...1/2"				
PLFY-P18NBMU-E	Refrigerant pipe ø6.35 / ø9.52 Flared connection 1/4" / 3/8" (compatible)	Refrigerant pipe ø12.7 / ø15.88 Flared connection 1/2" / 5/8" (compatible)	9-1/2 (241)	10-3/16 (258)	3-5/32 (80)	2-29/32 (74)
PLFY-P24NBMU-E PLFY-P30NBMU-E	Refrigerant pipe ...ø9.52 Flared connection ...3/8"	Refrigerant pipe ...ø15.88 Flared connection ...5/8"				
PLFY-P36NBMU-E	Refrigerant pipe ...ø15.88 / ø19.05 Flared connection 5/8" / 3/4"		11-1/16 (281)	11-3/4 (298)	3-11/32 (85)	3-1/32 (77)



Mitsubishi Electric Air Conditioning & Refrigeration Systems Works acquired ISO 9001 certification under Series 9000 of the International Standard Organization (ISO) based on a review of quality warranties for the production of refrigeration and air conditioning equipment.

ISO Authorization System  
The ISO 9000 series is a plant authorization system relating to quality warranties as stipulated by the ISO. ISO 9001 certifies quality warranties based on the "design, development, production, installation and auxiliary services" for products built at an authorized plant.



Mitsubishi Electric Air Conditioning & Refrigeration Systems Works acquired environmental management system standard ISO 14001 certification.

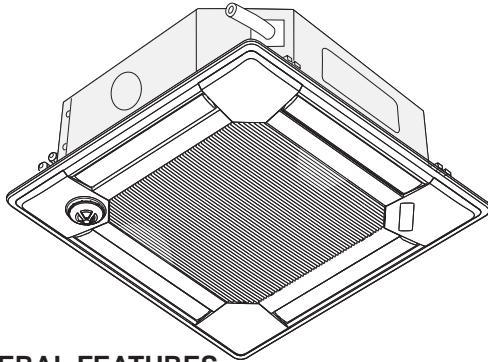
The ISO 14000 series is a set of standards applying to environmental protection set by the International Standard Organization (ISO).

**MITSUBISHI ELECTRIC**  
HVAC Advanced Products Division  
Mitsubishi Electric & Electronics USA, Inc.  
3400 Lawrenceville Suwanee Rd.  
Suwanee, GA 30024  
Tele: 678-376-2900 • Fax: 800-889-9904  
Toll Free: 800-433-4822 (#4)  
www.mehvac.com  
Specifications are subject to change without notice.

Job Name: \_\_\_\_\_

Drawing Reference: \_\_\_\_\_

Schedule No. \_\_\_\_\_



**GENERAL FEATURES**

- R410A or R22 refrigerant-compatible
- Lightweight, low-profile compact design
- Customizable wide airflow pattern enables better air distribution—direction of each vane can be adjusted to fit room layout through Deluxe MA or ME controllers
- Auto wave airflow in heating mode—unit independently cycles through horizontal and vertical positions for more even heat distribution
- Four-speed fan settings and auto fan speed adjustment mode
- Corner-pocket design for simplified installation
- Built-in condensate lift mechanism; lifts to 33-1/2 in.
- Outside air capability
- Multiple sizes up to 36,000 Btu/h
- i-see sensor option uses infrared rays to search for hot and cold spots

**SPECIFICATIONS**

Capacity\*  
 Cooling.....24,000 Btu/h  
 Heating.....27,000 Btu/h

Power  
 Power Source.....208 / 230V, 1-phase, 60Hz

Power Consumption  
 Cooling.....0.06 kW  
 Heating.....0.05 kW

Current  
 Cooling.....0.43 A  
 Heating.....0.36 A

Minimum Circuit Ampacity (MCA).....0.54 A  
 Maximum Overcurrent Protection (MOCP) Fuse.....15 A

External Finish...Grille (White; Munsell No. 6.4Y 8.9 / 0.4)

**External Dimensions**

Inches.....10-3/16 h x 33-1/8 w x 33-1/8 d  
 mm.....258 h x 840 w x 840 d

**Grille (PLP-40BAU):**

Inches.....1-3/8 h x 37-7/16 w x 37-7/16 d  
 mm.....35 h x 950 w x 950 d

**Net Weight**

Unit.....51 lbs. / 23 kg  
 Grille.....13 lbs. / 6 kg

Coil Type.....Cross Fin  
 (Aluminum Plate Fin and Copper Tube)

**Fan**

Type x Quantity.....Turbo Fan x 1  
 Airflow Rate  
 (Low - Mid 1 - Mid 2 - High).....530 - 565 - 636 - 706 cfm  
 Motor  
 Type.....DC Motor  
 Output.....0.050 kW

**Standard Air Filter**.....Polypropylene Honeycomb

**Refrigerant Piping Dimensions**

R410A or R22  
 Liquid (High Pressure).....3/8" / 9.52 mm Flare  
 Gas (Low Pressure).....5/8" / 15.88 mm Flare

**Drainpipe Dimension**.....O.D. 1-1/4" / 32 mm

**Sound Level**

(Low - Mid 1 - Mid 2 - High).....28 - 30 - 32 - 34 dB(A)

**Options**

- Air Outlet Shutter Plate (2 pieces).....PAC-SH51SP-E
- High-Efficiency Filter (MERV 10).....PAC-SH59KF-E
- Multi-function Casement.....PAC-SH53TM-E
- i-see Sensor Corner Panel.....PAC-SA1ME-E
- Wireless Signal Receiver.....PAR-SA9FA-E
- Space Panel.....PAC-SH48AS-E
- Flange for Ventilation Air Intake.....PAC-SH65OF-E

\* Cooling / Heating capacity indicated at the maximum value at operation under the following conditions:

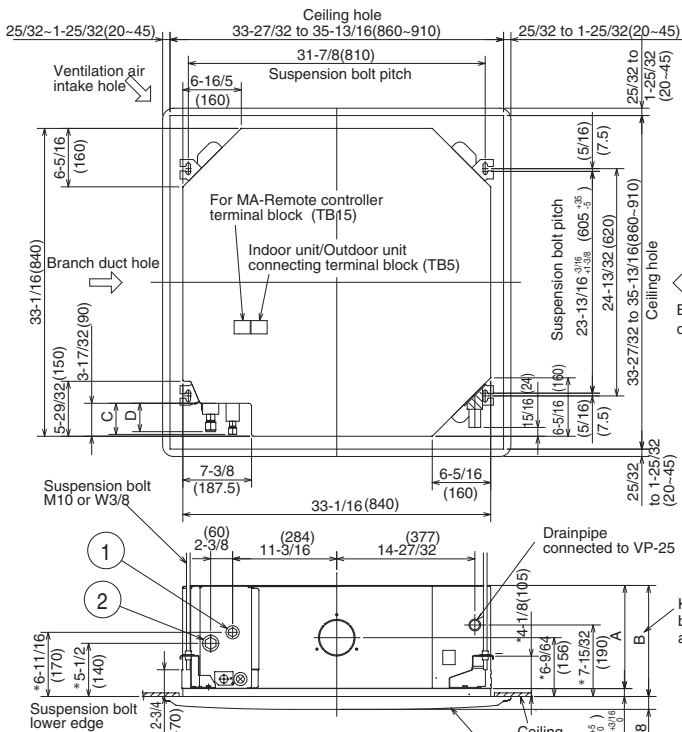
Cooling: Indoor 80°F (27°C) DB / 67°F (19°C) WB, Outdoor 95°F (35°C) DB  
 Heating: Indoor 70°F (21°C) DB, Outdoor 47°F (8°C) DB / 43°F (6°C) WB

**Note:** Ventilation air: Providing sufficient ventilation air is an important part of every building design. ASHRAE Standard 62 provides the minimum ventilation air requirement. Also, check local codes.

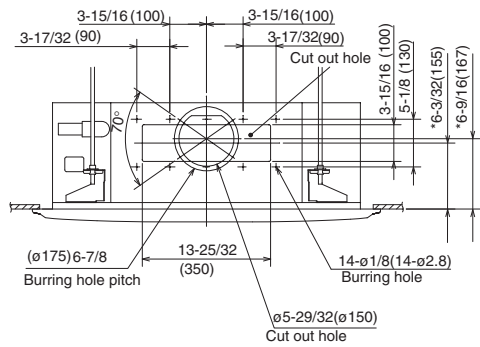
Notes: \_\_\_\_\_

# Model: PLFY-P24NBMU-E – DIMENSIONS

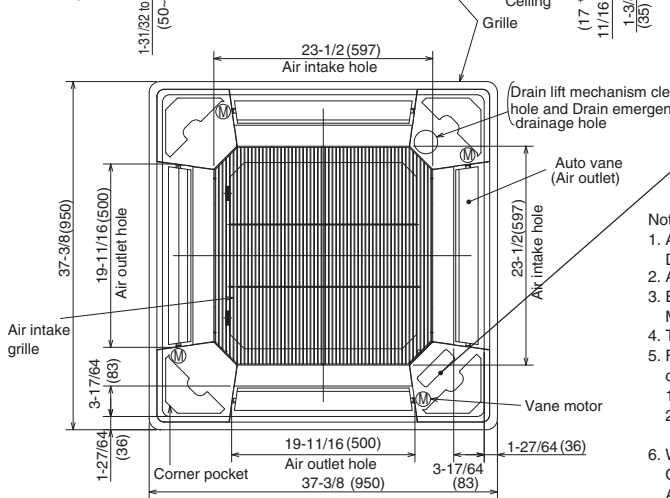
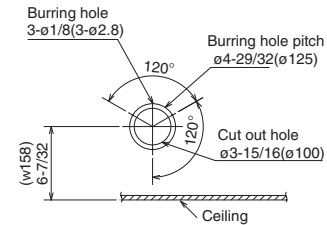
Unit : inch(mm)



## Detail connecting of branch duct

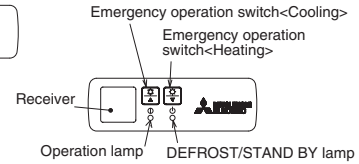


## Detail drawing of ventilation air intake hole



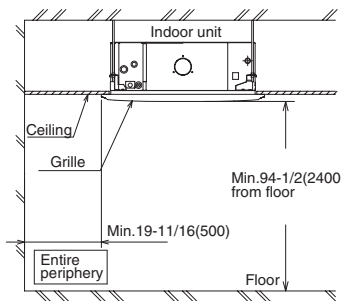
In case of standard grille

In case of wireless signal receiver



Note:

- As for drainpipe, please use O.D. 1-1/4(32) PVC TUBE. Drain lift mechanism is included.
- As for suspension bolt, please use M10 or 3/8. (Procured at local site)
- Electrical box may be removed for the service purpose. Make sure to slack the electrical wire little bit for control/power wires connection.
- The height of the indoor unit is able to be adjusted with the grille attached.
- For the installation of the optional high efficiency filter or optional multi-functional casement.
  - Add 5-5/16"(135mm) to the dimensions marked with an \* on the figures.
  - The optional high efficiency filter becomes optional multi-functional casement and concomitant use.
- When installing the branch ducts, be sure to insulate adequately. Otherwise condensation and dripping may occur. As for necessary installation / service space, please refer to the bottom, left figure.



Models	1	2	A	B	C	D
PLFY-P12NBMU-E PLFY-P15NBMU-E	Refrigerant pipe ...ø6.35 Flared connection ...1/4"	Refrigerant pipe ...ø12.7 Flared connection ...1/2"				
PLFY-P18NBMU-E	Refrigerant pipe ø6.35 / ø9.52 Flared connection 1/4" / 3/8" (compatible)	Refrigerant pipe ø12.7 / ø15.88 Flared connection 1/2" / 5/8" (compatible)	9-1/2 (241)	10-3/16 (258)	3-5/32 (80)	2-29/32 (74)
PLFY-P24NBMU-E PLFY-P30NBMU-E	Refrigerant pipe ...ø9.52 Flared connection ...3/8"	Refrigerant pipe ...ø15.88 Flared connection ...5/8"				
PLFY-P36NBMU-E	Refrigerant pipe ...ø15.88 / ø19.05 Flared connection 5/8" / 3/4"		11-1/16 (281)	11-3/4 (298)	3-11/32 (85)	3-1/32 (77)

Mitsubishi Electric Air Conditioning & Refrigeration Systems Works acquired ISO 9001 certification under Series 9000 of the International Standard Organization (ISO) based on a review of quality warranties for the production of refrigeration and air conditioning equipment.

ISO Authorization System  
The ISO 9000 series is a plant authorization system relating to quality warranties as stipulated by the ISO. ISO 9001 certifies quality warranties based on the "design, development, production, installation and auxiliary services" for products built at an authorized plant.



Mitsubishi Electric Air Conditioning & Refrigeration Systems Works acquired environmental management system standard ISO 14001 certification.

The ISO 14000 series is a set of standards applying to environmental protection set by the International Standard Organization (ISO).

Certificate Number EC97J1227

C SD - PLFY-P24NBMU-E - 1 - 200707 © MITSUBISHI ELECTRIC / HVAC 2007



**MITSUBISHI ELECTRIC**

**HVAC Advanced Products Division**

Mitsubishi Electric & Electronics USA, Inc.

3400 Lawrenceville Suwanee Rd.

Suwanee, GA 30024

Tele: 678-376-2900 • Fax: 800-889-9904

Toll Free: 800-433-4822 (#4)

www.mehvac.com

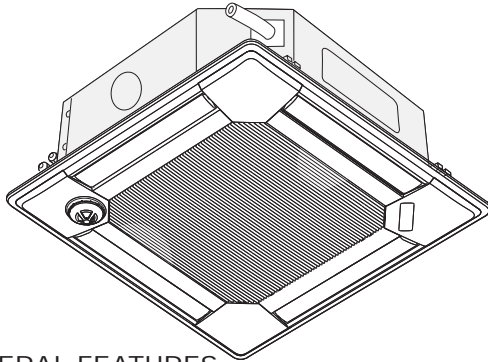
Specifications are subject to change without notice.



Job Name: \_\_\_\_\_

Drawing Reference: \_\_\_\_\_

Schedule No. \_\_\_\_\_



**GENERAL FEATURES**

- R410A or R22 refrigerant-compatible
- Lightweight, low-profile compact design
- Customizable wide airflow pattern enables better air distribution—direction of each vane can be adjusted to fit room layout through Deluxe MA or ME controllers
- Auto wave airflow in heating mode—unit independently cycles through horizontal and vertical positions for more even heat distribution
- Four-speed fan settings and auto fan speed adjustment mode
- Corner-pocket design for simplified installation
- Built-in condensate lift mechanism; lifts to 33-1/2 in.
- Outside air capability
- Multiple sizes up to 36,000 Btu/h
- i-see sensor option uses infrared rays to search for hot and cold spots

**SPECIFICATIONS**

Capacity\*  
 Cooling.....30,000 Btu/h  
 Heating.....34,000 Btu/h

Power  
 Power Source.....208 / 230V, 1-phase, 60Hz

Power Consumption  
 Cooling.....0.07 kW  
 Heating.....0.06 kW

Current  
 Cooling.....0.51 A  
 Heating.....0.43 A

Minimum Circuit Ampacity (MCA).....0.64 A  
 Maximum Overcurrent Protection (MOCP) Fuse.....15 A

External Finish...Grille (White; Munsell No. 6.4Y 8.9 / 0.4)

**External Dimensions**

Inches.....10-3/16 h x 33-1/8 w x 33-1/8 d  
 mm.....258 h x 840 w x 840 d

**Grille (PLP-40BAU):**

Inches.....1-3/8 h x 37-7/16 w x 37-7/16 d  
 mm.....35 h x 950 w x 950 d

**Net Weight**

Unit.....51 lbs. / 23 kg  
 Grille.....13 lbs. / 6 kg

Coil Type.....Cross Fin  
 (Aluminum Plate Fin and Copper Tube)

**Fan**

Type x Quantity.....Turbo Fan x 1  
**Airflow Rate**  
 (Low - Mid 1 - Mid 2 - High).....565 - 636 - 706 - 777 cfm  
**Motor**  
 Type.....DC Motor  
 Output.....0.050 kW

Standard Air Filter.....Polypropylene Honeycomb

**Refrigerant Piping Dimensions**

R410A or R22  
 Liquid (High Pressure).....3/8" / 9.52 mm Flare  
 Gas (Low Pressure).....5/8" / 15.88 mm Flare

Drainpipe Dimension.....O.D. 1-1/4" / 32 mm

**Sound Level**

(Low - Mid 1 - Mid 2 - High).....30 - 32 - 35 - 37 dB(A)

**Options**

- Air Outlet Shutter Plate (2 pieces).....PAC-SH51SP-E
- High-Efficiency Filter (MERV 10).....AC-SH59KF-E
- Multi-function Casement.....PAC-SH53TM-E
- i-see Sensor Corner Panel.....PAC-SA1ME-E
- Wireless Signal Receiver.....PAR-SA9FA-E
- Space Panel.....PAC-SH48AS-E
- Flange for Ventilation Air Intake.....PAC-SH65OF-E

\* Cooling / Heating capacity indicated at the maximum value at operation under the following conditions:

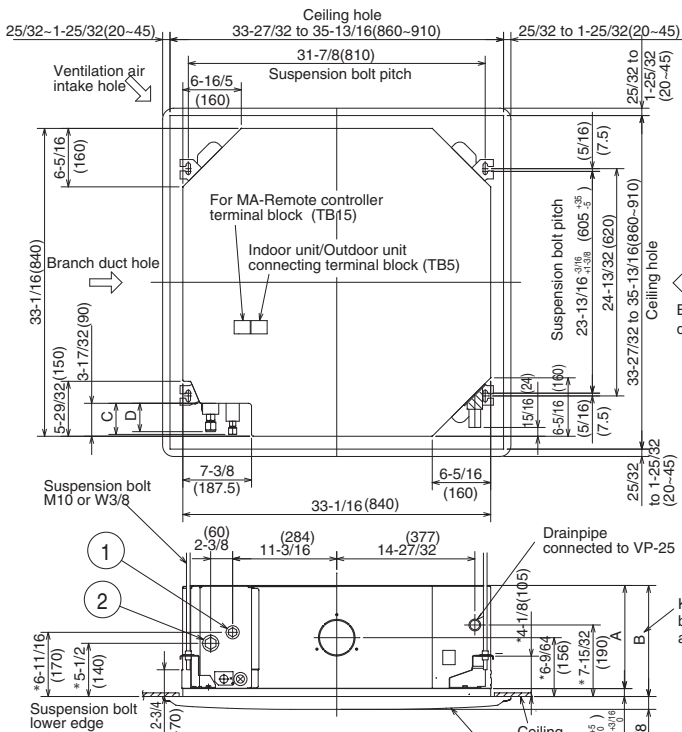
Cooling: Indoor 80°F (27°C) DB / 67°F (19°C) WB, Outdoor 95°F (35°C) DB  
 Heating: Indoor 70°F (21°C) DB, Outdoor 47°F (8°C) DB / 43°F (6°C) WB

Note: Ventilation air: Providing sufficient ventilation air is an important part of every building design. ASHRAE Standard 62 provides the minimum ventilation air requirement. Also, check local codes.

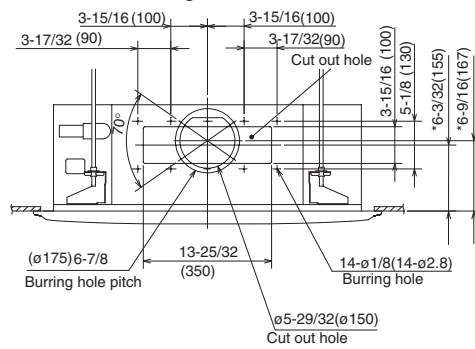
Notes:

# Model: PLFY-P30NBMU-E – DIMENSIONS

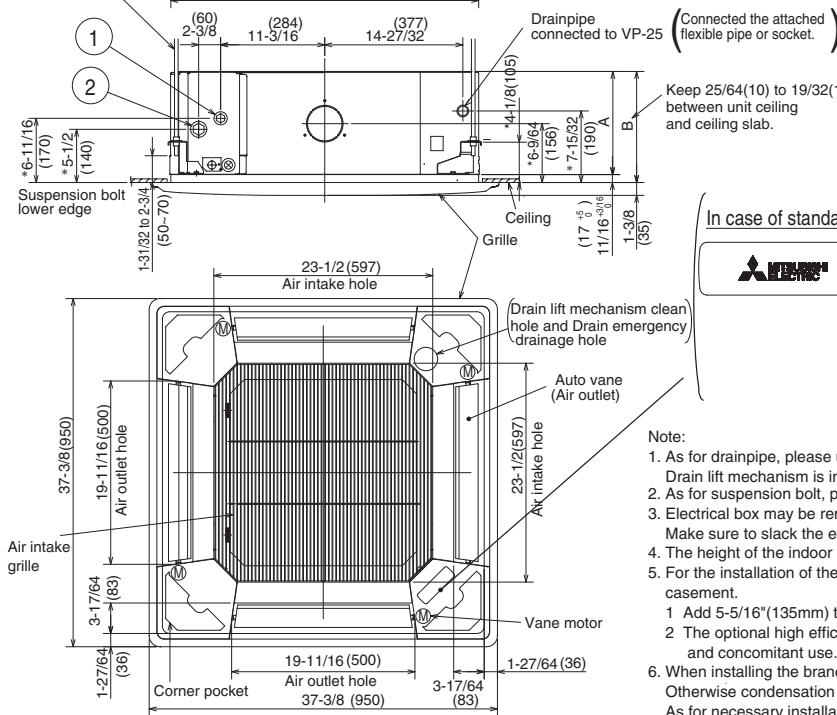
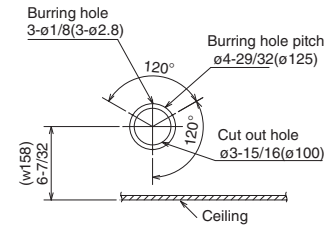
Unit : inch(mm)



## Detail connecting of branch duct

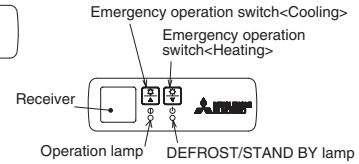


## Detail drawing of ventilation air intake hole



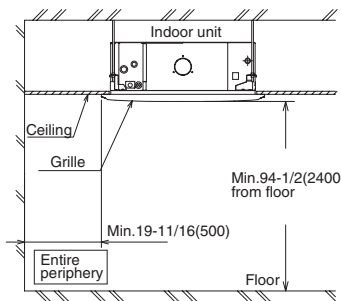
In case of standard grille

In case of wireless signal receiver



### Note:

- As for drainpipe, please use O.D. 1-1/4(32) PVC TUBE. Drain lift mechanism is included.
- As for suspension bolt, please use M10 or 3/8. (Procured at local site)
- Electrical box may be removed for the service purpose. Make sure to slack the electrical wire little bit for control/power wires connection.
- The height of the indoor unit is able to be adjusted with the grille attached.
- For the installation of the optional high efficiency filter or optional multi-functional casement.
  - Add 5-5/16"(135mm) to the dimensions marked with an \* on the figures.
  - The optional high efficiency filter becomes optional multi-functional casement and concomitant use.
- When installing the branch ducts, be sure to insulate adequately. Otherwise condensation and dripping may occur. As for necessary installation / service space, please refer to the bottom, left figure.



Models	1	2	A	B	C	D
PLFY-P12NBMU-E PLFY-P15NBMU-E	Refrigerant pipe ...ø6.35 Flared connection ...1/4"	Refrigerant pipe ...ø12.7 Flared connection ...1/2"				
PLFY-P18NBMU-E	Refrigerant pipe ø6.35 / ø9.52 Flared connection 1/4" / 3/8" (compatible)	Refrigerant pipe ø12.7 / ø15.88 Flared connection 1/2" / 5/8" (compatible)	9-1/2 (241)	10-3/16 (258)	3-5/32 (80)	2-29/32 (74)
PLFY-P24NBMU-E PLFY-P30NBMU-E	Refrigerant pipe ...ø9.52 Flared connection ...3/8"	Refrigerant pipe ...ø15.88 Flared connection ...5/8"				
PLFY-P36NBMU-E	Refrigerant pipe ...ø15.88 / ø19.05 Flared connection 5/8" / 3/4"	Refrigerant pipe ø15.88 / ø19.05 Flared connection 5/8" / 3/4" (compatible)	11-1/16 (281)	11-3/4 (298)	3-11/32 (85)	3-1/32 (77)

Mitsubishi Electric Air Conditioning & Refrigeration Systems Works acquired ISO 9001 certification under Series 9000 of the International Standard Organization (ISO) based on a review of quality warranties for the production of refrigeration and air conditioning equipment.

ISO Authorization System  
The ISO 9000 series is a plant authorization system relating to quality warranties as stipulated by the ISO. ISO 9001 certifies quality warranties based on the "design, development, production, installation and auxiliary services" for products built at an authorized plant.



Certificate Number FM33558



HVAC Advanced Products Division  
Mitsubishi Electric & Electronics USA, Inc.  
3400 Lawrenceville Suwanee Rd.  
Suwanee, GA 30024  
Tele: 678-376-2900 • Fax: 800-889-9904  
Toll Free: 800-433-4822 (#4)  
www.mehvac.com

Specifications are subject to change without notice.



Mitsubishi Electric Air Conditioning & Refrigeration Systems Works acquired environmental management system standard ISO 14001 certification.

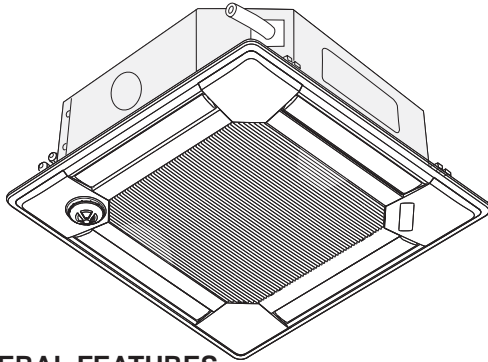
The ISO 14000 series is a set of standards applying to environmental protection set by the International Standard Organization (ISO).

Certificate Number EC97J1227

Job Name: \_\_\_\_\_

Drawing Reference: \_\_\_\_\_

Schedule No. \_\_\_\_\_



**GENERAL FEATURES**

- R410A or R22 refrigerant-compatible
- Lightweight, low-profile compact design
- Customizable wide airflow pattern enables better air distribution—direction of each vane can be adjusted to fit room layout through Deluxe MA or ME controllers
- Auto wave airflow in heating mode—unit independently cycles through horizontal and vertical positions for more even heat distribution
- Four-speed fan settings and auto fan speed adjustment mode
- Corner-pocket design for simplified installation
- Built-in condensate lift mechanism; lifts to 33-1/2 in.
- Outside air capability
- Multiple sizes up to 36,000 Btu/h
- i-see sensor option uses infrared rays to search for hot and cold spots

**SPECIFICATIONS**

**Capacity\***

Cooling.....36,000 Btu/h  
 Heating.....40,000 Btu/h

**Power**

Power Source.....208 / 230V, 1-phase, 60Hz

**Power Consumption**

Cooling.....0.16 kW  
 Heating.....0.15 kW

**Current**

Cooling.....1.07 A  
 Heating.....1.00 A

Minimum Circuit Ampacity (MCA).....1.34 A

Maximum Overcurrent Protection (MOCP) Fuse.....15 A

**External Finish**...Grille (White; Munsell No. 6.4Y 8.9 / 0.4)

**External Dimensions**

Inches.....11-3/4 h x 33-1/8 w x 33-1/8 d  
 mm.....298 h x 840 w x 840 d

**Grille (PLP-40BAU):**

Inches.....1-3/8 h x 37-7/16 w x 37-7/16 d  
 mm.....35 h x 950 w x 950 d

**Net Weight**

Unit.....60 lbs. / 27 kg  
 Grille.....13 lbs. / 6 kg

**Coil Type**.....Cross Fin  
 (Aluminum Plate Fin and Copper Tube)

**Fan**

Type x Quantity.....Turbo Fan x 1  
 Airflow Rate

(Low - Mid 1 - Mid 2 - High).....777 - 883 - 989 - 1059 cfm

**Motor**

Type.....DC Motor  
 Output.....0.120 kW

**Standard Air Filter**.....Polypropylene Honeycomb

**Refrigerant Piping Dimensions**

**R410A**

Liquid (High Pressure).....3/8" / 9.52 mm Flare  
 Gas (Low Pressure).....5/8" / 15.88 mm Flare

**R22**

Liquid (High Pressure).....3/8" / 9.52 mm Flare  
 Gas (Low Pressure).....3/4" / 19.05 mm Flare

**Drainpipe Dimension**.....O.D. 1-1/4" / 32 mm

**Sound Level**

(Low - Mid 1 - Mid 2 - High).....35 - 38 - 41 - 43 dB(A)

**Options**

- Air Outlet Shutter Plate (2 pieces).....PAC-SH51SP-E
- High-Efficiency Filter (MERV 10).....PAC-SH59KF-E
- Multi-function Casement.....PAC-SH53TM-E
- i-see Sensor Corner Panel.....PAC-SA1ME-E
- Wireless Signal Receiver.....PAR-SA9FA-E
- Space Panel.....PAC-SH48AS-E
- Flange for Ventilation Air Intake.....PAC-SH65OF-E

\* Cooling / Heating capacity indicated at the maximum value at operation under the following conditions:

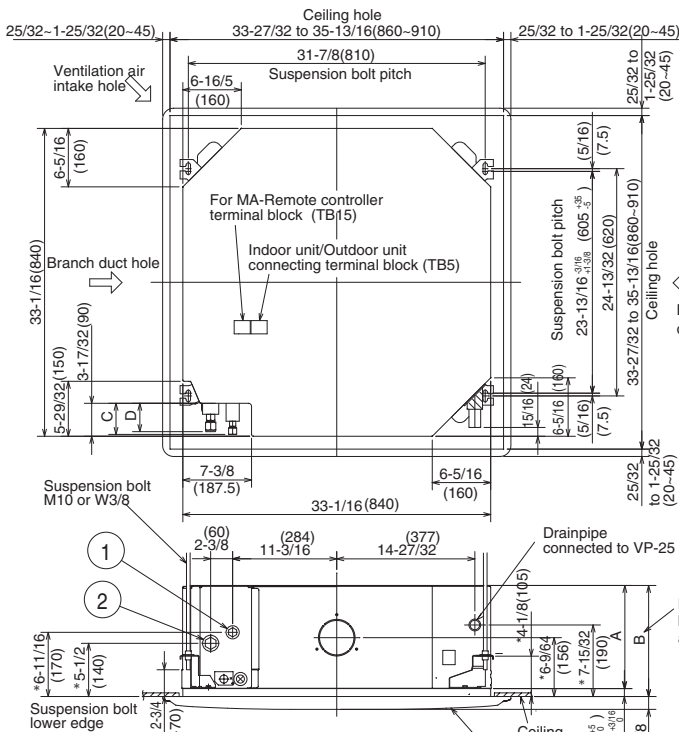
Cooling: Indoor 80°F (27°C) DB / 67°F (19°C) WB, Outdoor 95°F (35°C) DB  
 Heating: Indoor 70°F (21°C) DB, Outdoor 47°F (8°C) DB / 43°F (6°C) WB

**Note:** Ventilation air: Providing sufficient ventilation air is an important part of every building design. ASHRAE Standard 62 provides the minimum ventilation air requirement. Also, check local codes.

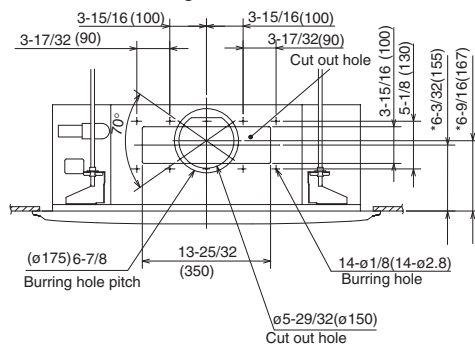
Notes:

# Model: PLFY-P36NBMU-E – DIMENSIONS

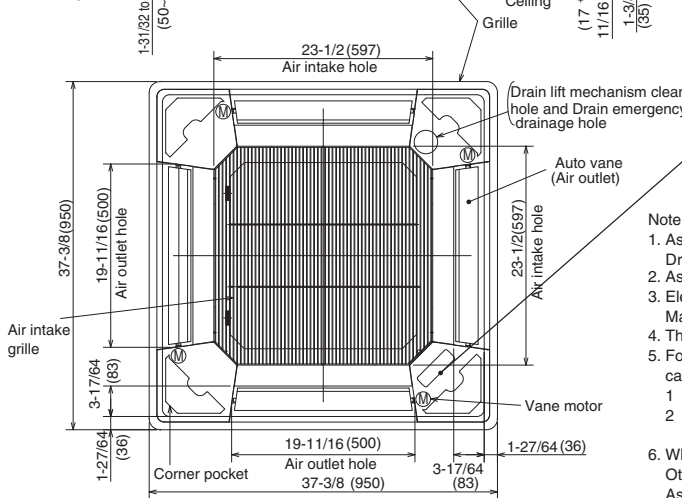
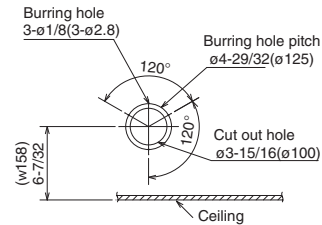
Unit : inch(mm)



## Detail connecting of branch duct

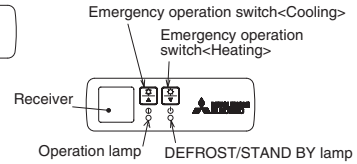


## Detail drawing of ventilation air intake hole



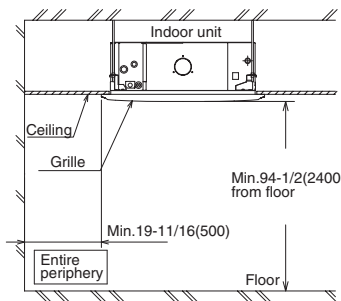
In case of standard grille

In case of wireless signal receiver



### Note:

- As for drainpipe, please use O.D. 1-1/4(32) PVC TUBE. Drain lift mechanism is included.
- As for suspension bolt, please use M10 or 3/8. (Procured at local site)
- Electrical box may be removed for the service purpose. Make sure to slack the electrical wire little bit for control/power wires connection.
- The height of the indoor unit is able to be adjusted with the grille attached.
- For the installation of the optional high efficiency filter or optional multi-functional casement.
  - Add 5-5/16"(135mm) to the dimensions marked with an \* on the figures.
  - The optional high efficiency filter becomes optional multi-functional casement and concomitant use.
- When installing the branch ducts, be sure to insulate adequately. Otherwise condensation and dripping may occur. As for necessary installation / service space, please refer to the bottom, left figure.



Models	1	2	A	B	C	D
PLFY-P12NBMU-E PLFY-P15NBMU-E	Refrigerant pipe ...ø6.35 Flared connection ...1/4"	Refrigerant pipe ...ø12.7 Flared connection ...1/2"				
PLFY-P18NBMU-E	Refrigerant pipe ø6.35 / ø9.52 Flared connection 1/4" / 3/8" (compatible)	Refrigerant pipe ø12.7 / ø15.88 Flared connection 1/2" / 5/8" (compatible)	9-1/2 (241)	10-3/16 (258)	3-5/32 (80)	2-29/32 (74)
PLFY-P24NBMU-E PLFY-P30NBMU-E	Refrigerant pipe ...ø9.52 Flared connection ...3/8"	Refrigerant pipe ...ø15.88 Flared connection ...5/8"				
PLFY-P36NBMU-E	Refrigerant pipe ...ø15.88 / ø19.05 Flared connection ...3/8"	Refrigerant pipe ø15.88 / ø19.05 Flared connection 5/8" / 3/4"	11-1/16 (281)	11-3/4 (298)	3-11/32 (85)	3-1/32 (77)

Mitsubishi Electric Air Conditioning & Refrigeration Systems Works acquired ISO 9001 certification under Series 9000 of the International Standard Organization (ISO) based on a review of quality warranties for the production of refrigeration and air conditioning equipment.

ISO Authorization System  
The ISO 9000 series is a plant authorization system relating to quality warranties as stipulated by the ISO. ISO 9001 certifies quality warranties based on the "design, development, production, installation and auxiliary services" for products built at an authorized plant.

Mitsubishi Electric Air Conditioning & Refrigeration Systems Works acquired environmental management system standard ISO 14001 certification.

The ISO 14000 series is a set of standards applying to environmental protection set by the International Standard Organization (ISO).



Certificate Number FM335568



Certificate Number EC97J1227

C SD - PLFY-P36NBMU-E - 1 - 200707 © MITSUBISHI ELECTRIC / HVAC 2007



**HVAC Advanced Products Division**

Mitsubishi Electric & Electronics USA, Inc.  
3400 Lawrenceville Suwanee Rd.  
Suwanee, GA 30024  
Tele: 678-376-2900 • Fax: 800-889-9904  
Toll Free: 800-433-4822 (#4)

www.mehvac.com

Specifications are subject to change without notice.