

Projects

■ San Onofre Nuclear Generating Station

- All 316 SST construction
- 316 SST DWDI fan
- Copper/copper coils



A complete list is available upon request

Projects

■ Caltrans Expansion Facility, San Diego

- 12 units
- Stacked to fit in space
- Split to fit through wall opening



A complete list is available upon request

Projects

■ Christian Community Credit Union

- Matched existing footprint

No curb adaptors required

- Aluminum construction

Met weight requirements without adding roof support

- Skid mounted condensing unit

Factory charged and tested.

- Controls provided by customer and installed by Alliance Air.

Tested by controls engineer at factory prior to shipment.



A complete list is available upon request

Projects

Nova Rx

- Cleaned with lint free cloth
- Alcohol wiped
- Shrink-wrapped for shipment
- Validated laboratory application



Projects

■ Long Beach & Santa Ana Post Offices

- Direct replacement projects (total of 46 rooftop units)
- Matched existing footprints



Projects

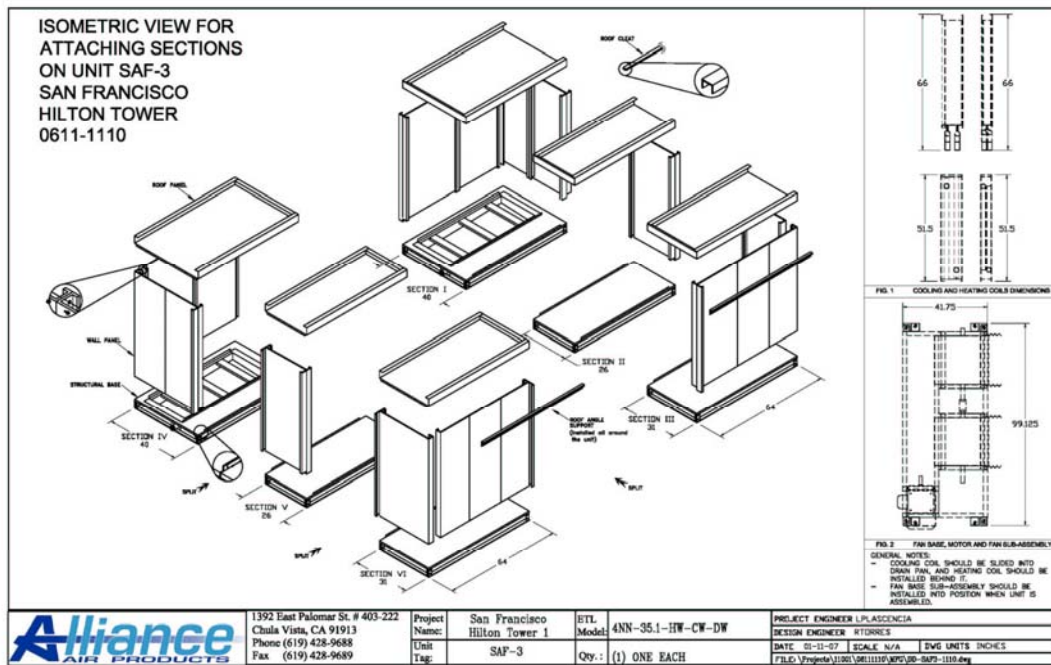
■ Bachem

- 3 week delivery cycle.
- Aluminum construction
- Copper/copper coils
- Aluminum tread-plate floors.
- VFD with bypass and disconnect in NEMA 3R enclosure



■ San Francisco Hilton

- 17,000 CFM
- Fit in 34"Wx89"Hx64"D service elevator
- Knock-down construction



■ Van Nuys Jail replacement (before)

- 27,000 CFM
- 4,500 CFM
- Units had to fit through a 88"H x 54"W Doorway

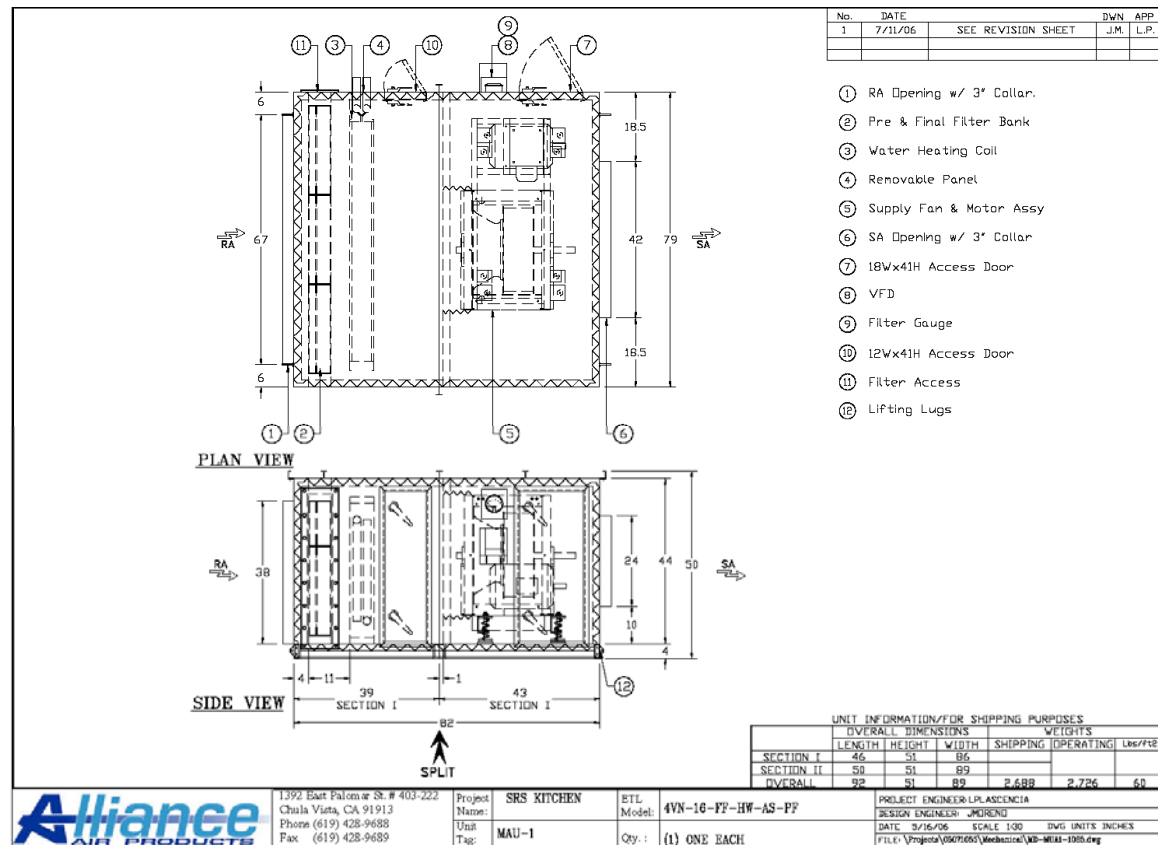


- Van Nuys Jail Replacement (after)
Alliance Air's Solution



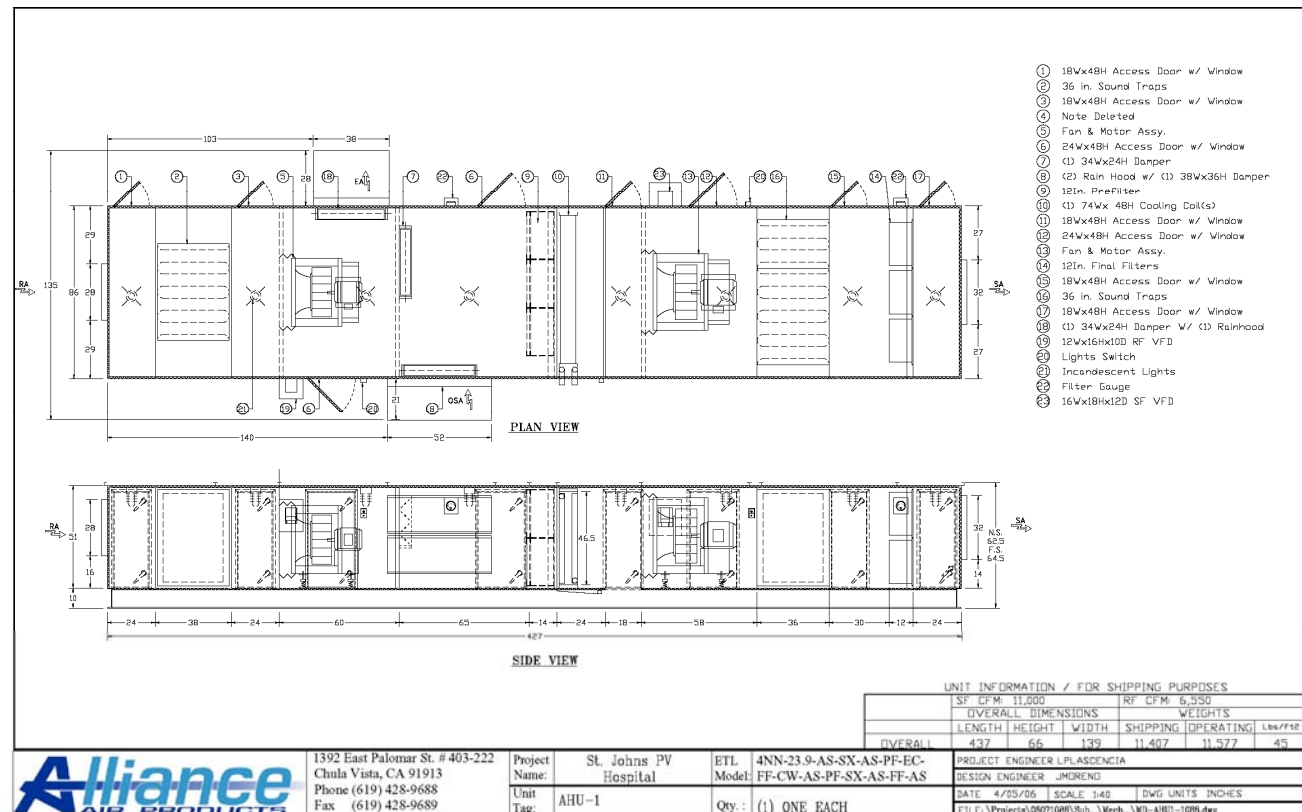
■ San Roque School Kitchen

- 8,400 CFM MAU unit
- Maximum dimensions are 52"H x 79"W x 84"L
- Had to ship in two pieces.



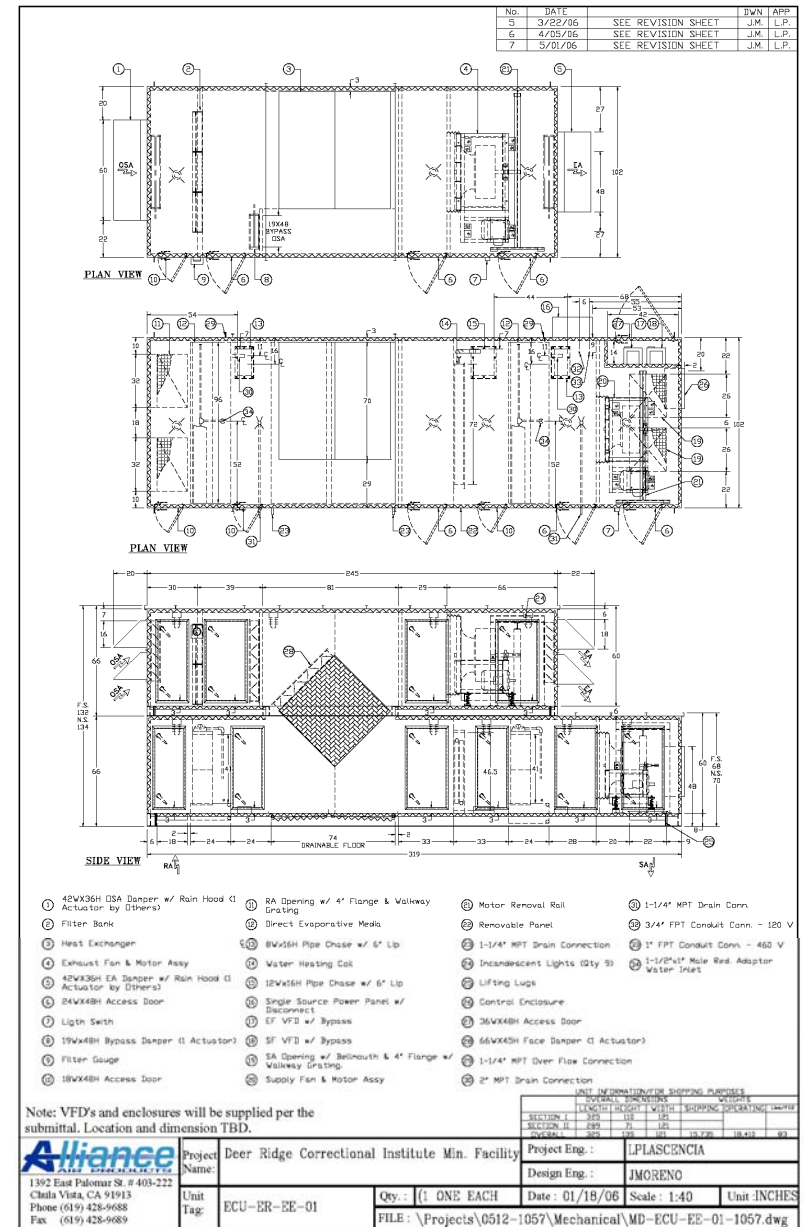
■ St Johns Pleasant Valley Hospital

- Turner Logistics project
- Numerous design changes
- Rapid response to questions and design changes



■ Deer Ridge Project

- 11,500 CFM
- Indirect Evaporative Cooling
- Air to Air Heat Exchanger
- Direct Evaporative Cooling
- Hot Water Coils



■ Deer Ridge Features

- Direct Evaporative Cooler
- GLASdek Media
- 3 stages of cooling



- Air to Air Heat Exchanger
- Acts as Indirect Cooling Device



■ Deer Ridge Features



Single Point
Electrical Connection

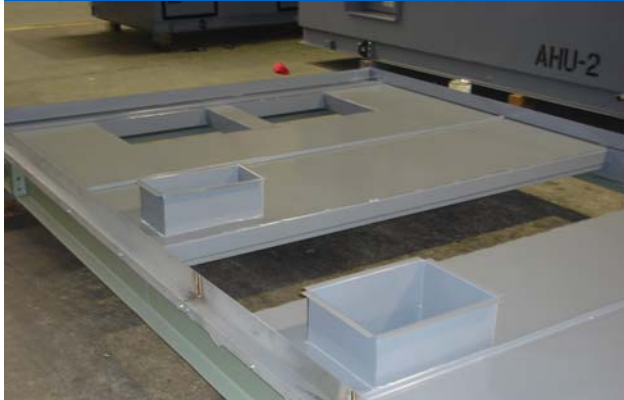


Control Panel



VFD Enclosure

■ Deer Ridge Features



•Pipe Chases

- Fan Enclosure
- Belt Guard
- Motor Removal rail

