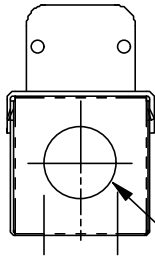


FIXTURE MAY BE INSTALLED ON ANY ANGLE



END VIEW

1/2" CONDUIT INLET, BOTH ENDS

X	Check Appropriate Box		
Fixture	P/N	Length	
115 Vac	10000300	As Shown	
208/230	10000400	As Shown	

NOTES:

1. UNIT SHIPPED WITH LAMP INSTALLED (DO NOT TOUCH GLASS)
2. REPLACEMENT UVC EMITTER, MODEL GTD 28 VO, PART NO, 20000300
3. CONSTRUCTED OF HOSPITAL GRADE STAINLESS STEEL & SPECULAR ALUMINUM
4. PRE-PUNCHED MOUNTING HOLES, USE #10 SCREWS, 4 REQD
5. INSTALLED WEIGHT 3 LBS.
6. ELECTRICAL REQUIREMENTS: 50/60 HZ - 80 WATTS
7. USE INTERLOCK ON ACCESS DOOR
8. UL & CSA LISTED

CAUTION PROTECT EYES AND SKIN - TURN UNITS OFF FOR SERVICE

A	5/17 99	FIRST ISSUE	RMC
REV DATE			DFT
NEXT ASS'Y			WT.
SALES DRAWING 30" DOUBLE ENDED FIXTURE & EMITTER MODEL DE 301 VO			
DRAWING NO.		REV.	
9905171		A	

STERIL-AIRE