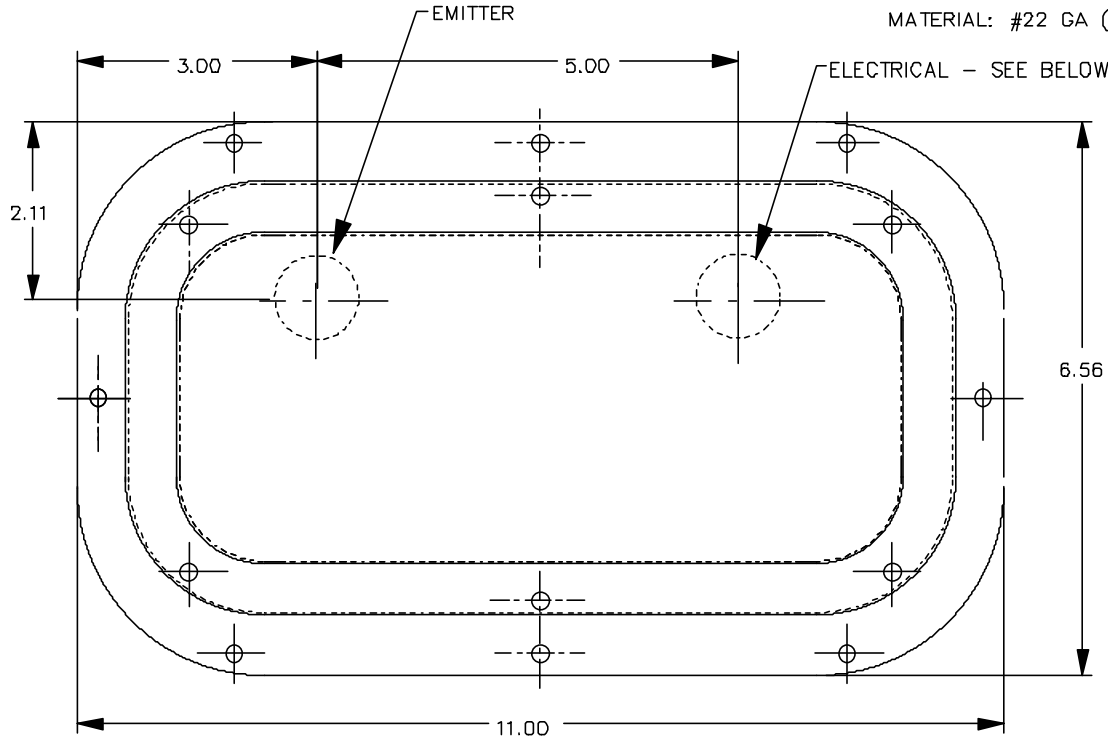
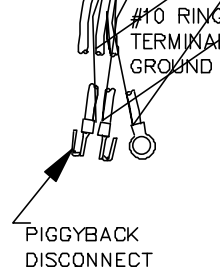
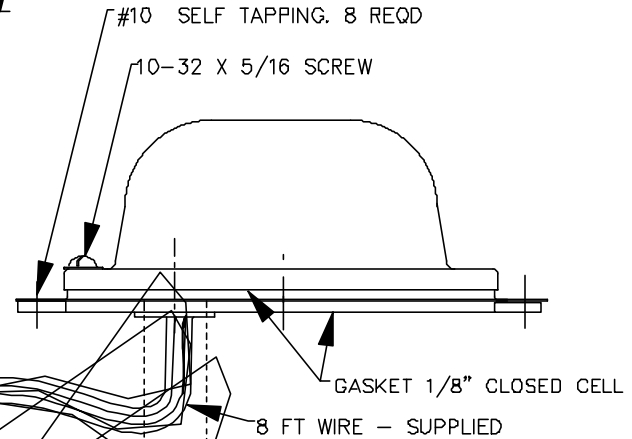
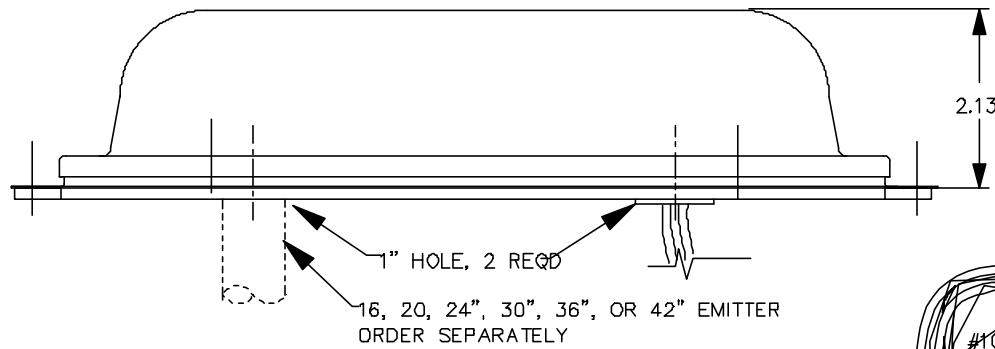


MATERIAL: #22 GA (.030) STAINLESS STEEL AND NOTED



X	Check Appropriate Boxes		
	Fixture	P/N	Length
	115 Vac	12000100	
	208/230	12000200	
	Emitter	P/N	
	GTS 16 VO	21000100	16"
	GTS 20 VO	21000200	20"
	GTS 24 VO	21000300	24"
	GTS 30 VO	21000400	30"
	GTS 36 VO	21000500	36"
	GTE 42 VO	21000600	42"



NOTES:

1. UNIT AND LAMP SHIPPED SEPARATE (DO NOT TOUCH GLASS)
2. REPLACEMENT UVC EMITTER, MODEL GTS __VO (SEE SCHEDULE)
3. CONSTRUCTED OF HOSPITAL GRADE STAINLESS STEEL
4. PRE-PUNCHED MOUNTING HOLES, USE #10 SCREWS, 8 REQD
5. INSTALLED WEIGHT 3 LBS.
6. ELECTRICAL REQUIREMENTS: 50/60 HZ 65 - 90 WATTS
7. USE INTERLOCK ON ACCESS DOOR
8. UL & CSA LISTED

PATENTED - CAUTION PROTECT EYES AND SKIN - TURN UNITS OFF FOR SERVICE

C	4/25 01	ADD GTS 42 VO	RMC
A	11/30 98	FIRST ISSUE	RMC
REV. DATE			DFT
NEXT ASS'Y			WT.
SALES DRAWING X - MOUNT PLUS FIXTURE MODEL SEN 1 VO			
DRAWING NO. 9811304			REV. C

STERIL-AIRE